



**Bobcat**<sup>®</sup>

*One Tough Animal.*

# LPG FORKLIFTS

7-Series, Pneumatic, 4.0 to 5.5 ton capacity

🌐 EMEA



# ONE TOUGH ANIMAL

**▶ OUR MISSION**

We empower operators to accomplish more, while working in the toughest conditions and tightest situations. When our customers have the will, we provide the way.

## INTRODUCTION

**▶ BOBCAT'S HISTORY**

In 1958, Melroe Manufacturing Company introduced a compact front-end loader that evolved quickly into the M400, the world's first true skid steer loader. The company soon adopted what became the world-famous 'Bobcat' brand – and its success paved the way for the global compact equipment industry we know today.



**▶ YEARS OF EXPERIENCE**

In 2021, Bobcat furthered its reach by acquiring Doosan Industrial Vehicle, increasing its capacity to provide customers with comprehensive business solutions. With Doosan's expertise in material handling and warehouse equipment dating back to its inaugural forklift in 1968, the company has established a global presence, with 400 dealers across 93 countries.



**▶ BOBCAT TODAY**

Now, with a diversified portfolio that includes forklifts and warehouse equipment, Bobcat serves as a one-stop solution for intralogistics needs, from loading shipping containers to optimizing warehouse operations. Produced in its South Korean factory, Bobcat's material handling machines offer the precision and durability customers expect.



# TOUGH, AGILE & SAFE

## ► READY TO GIVE YOUR BUSINESS A LIFT

Boost your business with an LPG forklift that has it all: high performance, a powerful and efficient engine, smooth and variable controls, and a comprehensive set of safety features. This rugged, dependable machine is also easy to service, ensuring a low total cost of ownership.



## ► MAXIMIZE PRODUCTIVITY

Achieve even more efficiency each day with a high-performance engine – delivering 69 kW of power and 290 Nm of torque – elevating productivity across all tasks. **P. 6-7**



## ► COMFORTABLE ALL SHIFT LONG

Enjoy the comfort of a spacious cab with plenty of leg room, deluxe suspended seat, integrated instrument panel, tiltable steering column, and many more features. **P. 8-9**



## ► SAFETY FIRST

Protect your investment, workforce, and handled goods with excellent all-around visibility, reliable oil-cooled brakes, and a host of other safety features that come as standard. **P. 10-11**



## ► MAXIMUM UPTIME

Minimize the total cost of ownership with longer service intervals and high-quality, genuine Bobcat parts and consumables. They offer excellent value and help keep your machine running smoother longer. **P. 12-13**



# OUTSTANDING PRODUCTIVITY



## ▶ HYDRAULIC CONTROL

Experience the convenience of hydraulic control for lifting and tilting, providing efficient and precise handling for all your material transport needs.



## ▶ CUSTOMIZE YOUR WORKPLACE

Choose from 2 different torque modes that suit your working environment. The Eco mode limits engine consumption by enhancing fuel performance, while the Standard mode is suitable for all tasks.



## ▶ CHANGE DIRECTIONS EFFORTLESSLY

The thoroughly tested powershift transmission manages the clutch oil pressure precisely, guaranteeing seamless transitions between forward and reverse. This control prevents transmission damage, ensuring a stronger and longer-lasting forklift.



## ▶ OIL-COOLED DISC BRAKES

Enjoy oil-cooled disc brakes for better braking and faster cycles, giving you the confidence to navigate and stop quickly. This enhancement significantly speeds up task completion and boosts overall productivity.

# COMFORT & CONTROLS



## ▶ IMPROVED VISIBILITY

Benefit from improved operator visibility in all working positions, thanks to a wider mast window, repositioned hydraulic hoses, and a flat bar-style overhead guard.

## ▶ DELUXE SUSPENSION SEAT

The deluxe suspension seat is designed to maximize operator comfort. It features a larger recline, adjustable seat length, and weight resistance on the front side, providing the most comfortable seating experience.



## ▶ FULL OR MODULAR CAB

Equip your forklift with one of our full or modular cabs to conquer all weather conditions. Add options such as a heater, operator fan, and power jack for all-day comfort.

## ▶ REAR CAMERA DISPLAY

Opt for a rear-view camera to enhance visibility. It activates automatically, feeding in to the in-cab display when in reverse, allowing you to enjoy the best view of your workplace without compromising comfort.

## ▶ RADIO AND MP3 PLAYER



Enjoy even the longest shifts with an optional radio and MP3 player.

## ▶ EASY ACCESS



This forklift features a low step height, facilitating easy and safe operator entry and exit, complemented by an entry grab bar and an anti-slip step plate.

## ▶ ERGONOMIC CONTROLS



Thanks to the ergonomic design and precise placement of the controls, operating this machine is straightforward and efficient.



# SAFETY IN EVERY MOVE

## ▶ ADVANCED PROTECTION FOR YOU AND YOUR OPERATION

Bobcat forklifts have safety embedded in their DNA. Packed with tons of features that protect your health and your investment, these machines give you peace of mind in every task, every day.

### ▶ OPERATOR SENSING SYSTEM

The intelligent Operator Sensing System (OSS) prevents unintended forklift movement by automatically stopping the truck's travel and mast lifting functions whenever the operator leaves the seat.



### ▶ MAST LOWERING INTERLOCK & TILT LOCK

The Mast Lowering Interlock & Tilt Lock system prevents unintentional lowering and tilting of the mast.



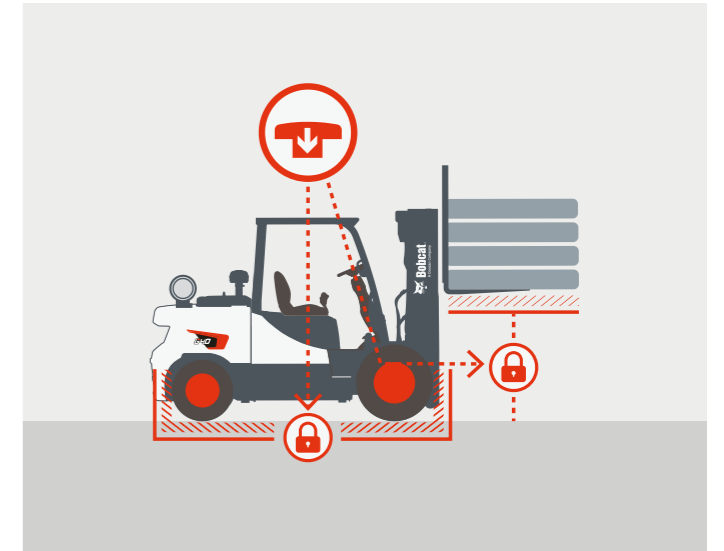
### ▶ BACKUP ALARM

The backup alarm emits a warning signal when the operator is driving in reverse, alerting those in the nearby vicinity.



### ▶ EMERGENCY SWITCH

Activating the emergency switch quickly stops the forklift by cutting off the engine's power supply.



### ▶ WEIGHT SCALE

With the help of an integrated weight scale, operators can prevent truck overload, keeping the workplace safer and more secure.



### ▶ GROUND SPEED CONTROL

Setting a speed limit prevents the truck from going too fast. This limit can be customized for both forward and reverse directions.



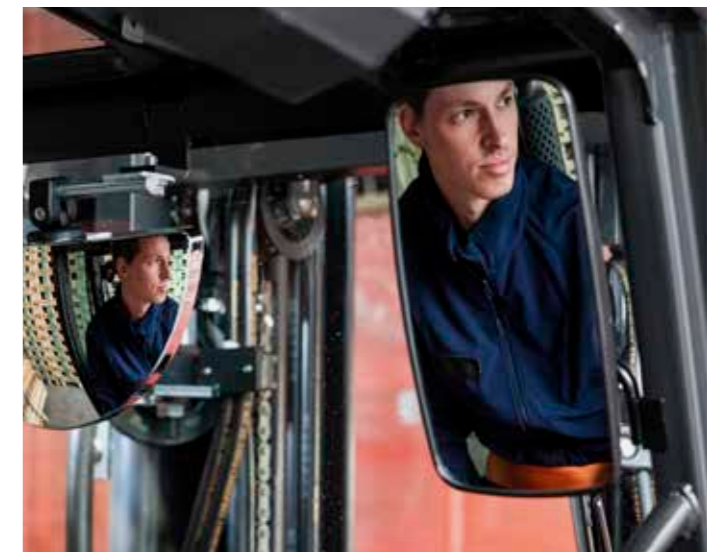
### ▶ BRIGHTER AND SAFER

Experience a brighter, safer, and more efficient workday with our front working lights, combination lamps, and an additional rear light.



### ▶ LARGE PANORAMIC MIRROR

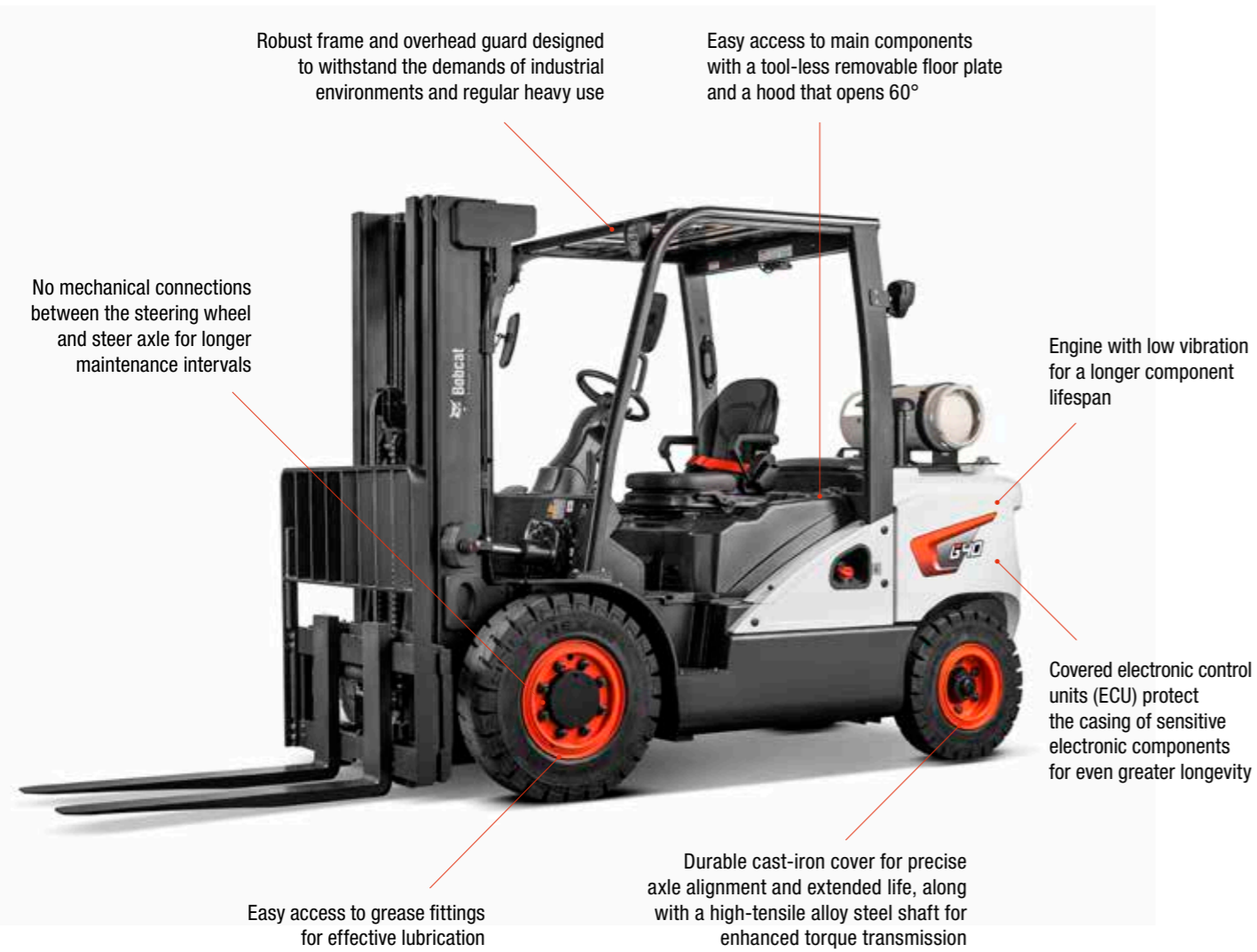
The large panoramic mirror offers excellent visibility of the rear working area, enhancing safety and contributing to your overall productivity.



# BUILT TO LAST

## ▶ A HERITAGE OF RELIABILITY

The sturdy mast and frame, fully floating drive axle, and oil-cooled disc brakes ensure years of productivity, all day, every day.



# THERE'S NO TIME FOR DOWNTIME. STAND UP TO EVERY TASK THAT COMES YOUR WAY, DAY AFTER DAY.

## 2 YEAR WARRANTY

### ▶ WARRANTY

Bobcat develops every machine to the highest standards of quality and durability. That's why our standard warranty provides 24 months or 2 000 operating hours (whichever occurs first) of coverage.



### ▶ PROTECTION PLUS EXTENDED WARRANTY

Enjoy total peace of mind with Protection Plus extended warranty. Providing the same level of protection as the standard warranty, Protection Plus also reflects different customer needs and expectations by offering a choice of durations and annual operating hours.

### ▶ EXTENSIVE DEALER NETWORK

You can rely on our network of dealers and service partners who are always ready to help you.

### ▶ BOBCAT GENUINE PARTS

Quality components delivered to our dealers guarantee that all of our equipment is built to last, withstand the toughest conditions and provide reliable performance.

# MAIN SPECIFICATIONS

| TECHNICAL DATA ACCORDING TO VDI 2198                 |       |                  |         |             |         |                  |         |               |         |                  |         |               |         |
|--|-------|------------------|---------|-------------|---------|------------------|---------|---------------|---------|------------------|---------|---------------|---------|
|  |       | G50C-7           |         | G55C-7      |         | G40SC-7          |         | G45SC-7       |         | G50SC-7          |         | G55SC-7       |         |
| Drive  |       | LPG              |         |             |         |                  |         |               |         |                  |         |               |         |
| Load capacity (kg)                                   | Q     | 5 000            |         | 5 500       |         | 4 000            |         | 4 500         |         | 5 000            |         | 5 500         |         |
| Load center (mm)                                     | c     | 600              |         |             |         |                  |         | 500           |         |                  |         |               |         |
| Load distance: center of drive axle to fork (mm)     | x     | 571              |         |             |         |                  |         | 561           |         |                  |         | 571           |         |
| Wheelbase (mm)                                       | y     | 2 100            |         |             |         | 2 000            |         |               |         | 2 100            |         |               |         |
| Service weight                                       |       | 7 050            |         | 7 390       |         | 5 790            |         | 6 180         |         | 6 550            |         | 7 050         |         |
| Tread, front (mm)                                    | b10   | 1 153 / 1 290    |         |             |         | 1 138 / 1 290    |         |               |         | 1 153 / 1 290    |         |               |         |
| Tread, rear (mm)                                     | b11   |                  |         |             |         | 1 115            |         |               |         |                  |         |               |         |
| Tilt of mast / fork carriage forward / backward (°)  | α/β   |                  |         |             |         | 8/10             |         |               |         |                  |         |               |         |
| Height, mast lowered (mm)                            | h1    | 2 090 – 3 455    |         |             |         | 2 090 – 3 450    |         |               |         | 2 090 – 3 455    |         |               |         |
| Free lift (mm)                                       | h2    | 170 – 1 830      |         |             |         | 160 – 2 030      |         |               |         | 160 – 1 945      |         | 170 – 1 830   |         |
| Lift height (mm)                                     | h3    | 2 750 – 5 925    |         |             |         |                  |         | 3 000 – 6 050 |         |                  |         | 2 750 – 5 925 |         |
| Height, mast extended (mm)                           | h4    | 4 170 – 7 355    |         |             |         | 4 265 – 7 330    |         | 4 270 – 7 335 |         | 4 420 – 7 480    |         | 4 170 – 7 355 |         |
| Height of overhead guard (cab) (mm)                  | h6    | 2 230            |         |             |         | 2 225            |         |               |         | 2 230            |         |               |         |
| Height of seat (mm)                                  | h7    | 1 255            |         |             |         | 1 248            |         |               |         | 1 255            |         |               |         |
| Overall length (mm)                                  | l1    | 4 525            |         | 4 550       |         | 4 165            |         | 4 215         |         | 4 480            |         | 4 525         |         |
| Length to forkface (mm)                              | l2    | 3 325            |         | 3 350       |         | 3 115            |         | 3 165         |         | 3 280            |         | 3 325         |         |
| Overall width (mm)                                   | b1    | 1 455            |         |             |         | 1 370            |         |               |         | 1 455            |         |               |         |
| Fork dimensions (mm)                                 | s/e/l | 60 × 150 × 1 200 |         |             |         | 50 × 150 × 1 050 |         |               |         | 50 × 150 × 1 200 |         |               |         |
| Fork carriage width (mm)                             | b3    | 1 330            |         |             |         | 1 250            |         |               |         | 1 330            |         |               |         |
| Ground clearance, loaded, below mast (mm)            | m1    | 160              |         |             |         | 150              |         |               |         | 160              |         |               |         |
| Ground clearance, center of wheelbase (mm)           | m2    |                  |         |             |         | 205              |         |               |         |                  |         |               |         |
| Aisle width for pallets 1 000 × 1 200 crossways (mm) | Ast   | 4 695            |         | 4 745       |         | 4 542            |         | 4 592         |         | 4 637            |         | 4 695         |         |
| Aisle width for pallets 800 × 1 200 crossways (mm)   | Ast   | 4 895            |         | 4 945       |         | 4 742            |         | 4 792         |         | 4 837            |         | 4 895         |         |
| External turning radius (mm)                         | Wa    | 2 925            |         | 2 975       |         | 2 782            |         | 2 832         |         | 2 877            |         | 2 925         |         |
| Travel speed, loaded / unloaded (km/h)               |       | 19.5 / 20.5      | 20 / 21 | 19.5 / 20.5 | 19 / 20 | 20 / 21          | 20 / 21 | 19.5 / 20.5   | 20 / 21 | 19.5 / 20.5      | 20 / 21 | 19.5 / 20.5   | 20 / 21 |
| Lift speed, loaded / unloaded (mm/s)                 |       | 0.49 / 0.54      |         | 0.47 / 0.54 |         |                  |         | 0.5 / 0.54    |         |                  |         | 0.49 / 0.54   |         |
| Lowering speed, loaded /unloaded (mm/s)              |       | 0.49 / 0.45      |         |             |         |                  |         | 0.48 / 0.45   |         |                  |         | 0.49 / 0.45   |         |
| Max. drawbar pull, loaded (kg)                       |       | 3 473            | 2 630   | 3 453       | 2 610   | 3 542            | 2 700   | 3 481         | 2 650   | 3 500            | 2 650   | 3 473         | 2 630   |
| Max. gradeability, loaded /unloaded (%)              |       | 30.1 / 54.2      |         | 27.8 / 50.9 |         | 41.3 / 73.4      |         | 36.4 / 65.4   |         | 33.3 / 60.1      |         | 30.1 / 54.2   |         |
| Service brake  |       | foot / hyd       |         |             |         |                  |         |               |         |                  |         |               |         |
| Engine manufacturer*                                 |       | Kubota           |         |             |         |                  |         |               |         |                  |         |               |         |
| Engine type  |       | LP               | DF      | LP          | DF      | LP               | DF      | LP            | DF      | LP               | DF      | LP            | DF      |
| Engine power according to DIN ISO1585 (kW)           |       | 69               | 66,7    | 69          | 66,7    | 69               | 66,7    | 69            | 66,7    | 69               | 66,7    | 69            | 66,7    |
| Rated speed (min <sup>-1</sup> )                     |       | 2 500            |         |             |         |                  |         |               |         |                  |         |               |         |
| Torque at 1/min (N•m)                                |       | 290              |         |             |         |                  |         |               |         |                  |         |               |         |
| Number of cylinders / displacement                   | cc    | 4 / 3 769        |         |             |         |                  |         |               |         |                  |         |               |         |

\* Engine Kubota LP 69 kW: Non certificated or compliant with EPA Tier III or EU Stage5  
 Engine Kubota DF 66.7 kW: Compliant with EPA Tier III

Specification values in this sheet have been rounded. Performance may vary depending on operating conditions. Products and specifications are subject to improvement and change without prior notice.

(1) Mast dimensions refer to a range from the lowest to the highest available mast with load backrest.

Note: Load capacities are based on the standard chassis without a side shifter.

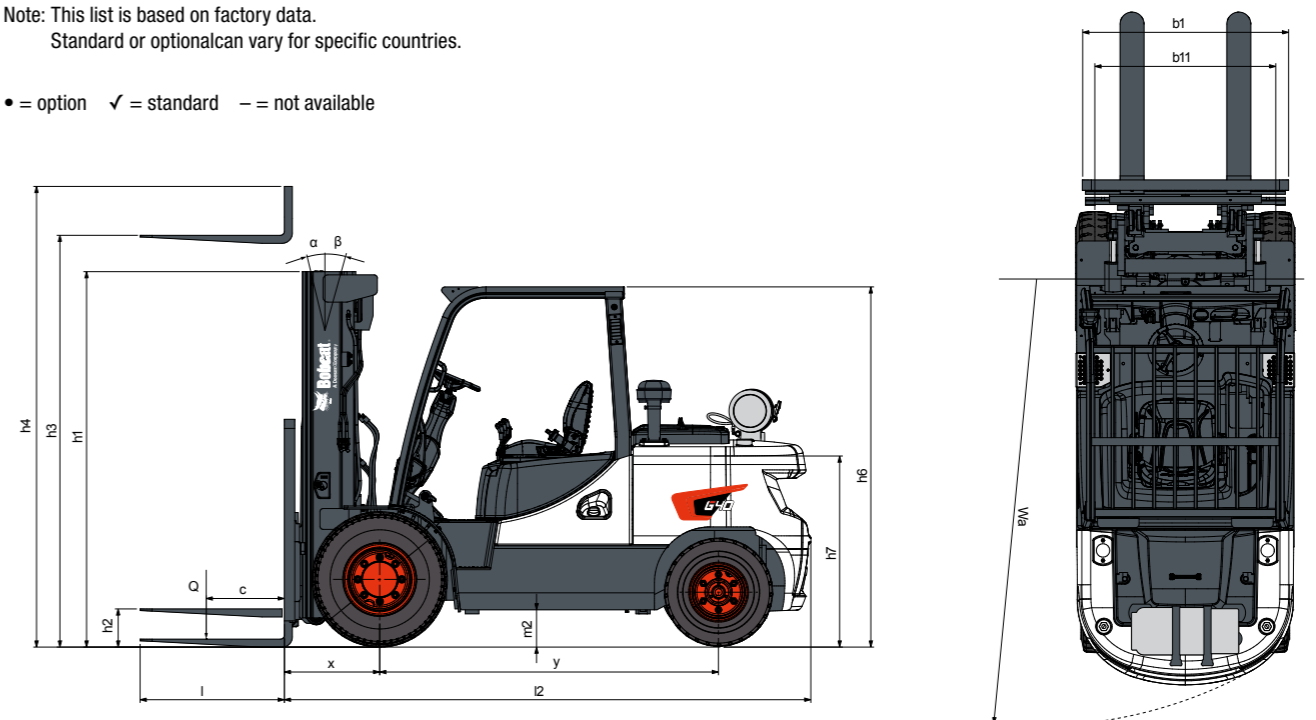
# STANDARD EQUIPMENT & OPTIONS

| STANDARD EQUIPMENT & OPTIONS         |   |
|--------------------------------------|---|
| <b>PRODUCTIVITY</b>                  |   |
| Power steering                       | ✓ |
| High-powered, fuel-efficient engine  | ✓ |
| Multi-torque mode                    | ✓ |
| Inching pedal                        | ✓ |
| Auto tilt levering                   | • |
| Mono pedal with autoshift controller | • |
| Autoshift controller                 | • |
| Quick disconnect hose couplings      | • |
| <b>SAFETY</b>                        |   |
| Direction lever function             | ✓ |
| Mast lowering and tilting interlock  | ✓ |
| Engine shutdown                      | ✓ |
| Parking brake                        | ✓ |
| Overhead guard                       | ✓ |
| 2 front LED lights                   | ✓ |
| Operating Sensing System (OSS)       | ✓ |
| Neutral position for start           | ✓ |
| Front lights with combination lamps  | • |
| Rear safety light                    | • |
| Emergency lamp and switch            | • |
| Backup alarm                         | • |
| Panoramic mirror                     | • |
| Rear grab bar (with horn)            | • |
| Seat belt interlock                  | • |
| Back-up buzzer                       | • |
| Swing out and down LPG cradle        | • |
| Ground speed control                 | • |
| Weight indicator                     | • |
| Rear-view camera                     | • |
| Lift eyes                            | • |

| STANDARD EQUIPMENT & OPTIONS  |   |
|---|---|
| <b>ERGONOMICS</b>   |   |
| Excellent visibility  | ✓ |
| Easy entry grip bar   | ✓ |
| Anti-slip step plate  | ✓ |
| Adjustable steering column  | ✓ |
| Integrated instrument panel   | ✓ |
| Easy to read display  | ✓ |
| Steering wheel knob   | • |
| Large rear-view mirror  | • |
| Radio and MP3   | • |
| Suspension seat   | • |
| Mono pedal  | • |
| Cigar and power jack (12V)  | • |
| Cup holder  | • |
| Full cab (sun visor, heater or air conditioner, sound suppression, tilting roof & window) | • |
| <b>RELIABILITY</b>  |   |
| Oil-cooled disc brakes (ODB)  | ✓ |
| Electronic control units (ECU) cover  | ✓ |
| Waterproof connectors   | ✓ |
| Precleaner  | • |
| Heavy-duty cooling system   | • |
| Belly plate   | • |
| Defroster fan   | • |
| <b>SERVICEABILITY</b>   |   |
| Dual element air cleaner and rain cap   | ✓ |
| Integrated electric components (relays and fuses)   | ✓ |
| Tool-less removeable floor plate  | ✓ |
| Easy-to-access components   | ✓ |
| Wide hood opening   | ✓ |
| EasyView (software to adjust parameters)  | ✓ |
| Service notifications   | ✓ |

Note: This list is based on factory data. Standard or optional can vary for specific countries.

• = option    ✓ = standard    – = not available





# FINANCING OPTIONS

## 24, 36, OR 48 MONTH FINANCING\*

Take advantage of 24, 36 or 48 month financing programs starting from **0% interest** and improve your cashflow.

Ask your dealer for the financing offers available.

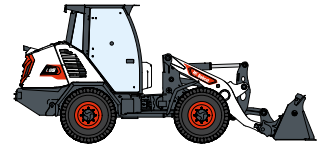
**340 MACHINES / 150 ATTACHMENT FAMILIES / 1 TOUGH ANIMAL**



**SKID-STEER  
LOADERS**



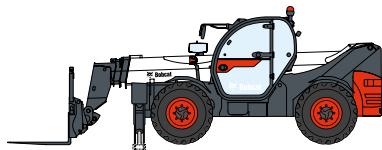
**COMPACT TRACK  
LOADERS**



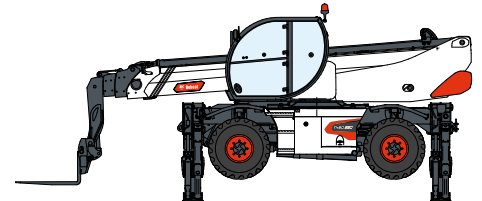
**COMPACT WHEEL  
LOADERS**



**FORKLIFTS**



**TELEHANDLERS**



**ROTARY TELEHANDLERS**



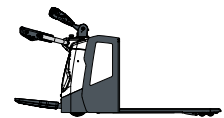
**LIGHT COMPACTION  
EQUIPMENT**



**COMPACT  
EXCAVATORS**



**COMPACT  
TRACTORS**



**WAREHOUSE  
EQUIPMENT**



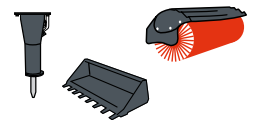
**MINI TRACK  
LOADER**



**MOWERS**



**PORTABLE  
POWER**



**ATTACHMENTS**

**DOOSAN**

Bobcat is a Doosan Company. Doosan is a global leader in construction equipment, power & water solutions, engines, and engineering proudly serving customers and communities for more than a century. | Bobcat and the Bobcat logo are registered trademarks of Bobcat Company in the United States and various other countries. ©2024 Bobcat Company. All Rights Reserved.



**Bobcat**®

\*Financing options may vary by country and dealer. Always ask your dealer about currently available financing options. Terms and conditions may apply.

Doosan Bobcat EMEA, U Kodelky 1810, 263 12 Dobříš, Czech Republic